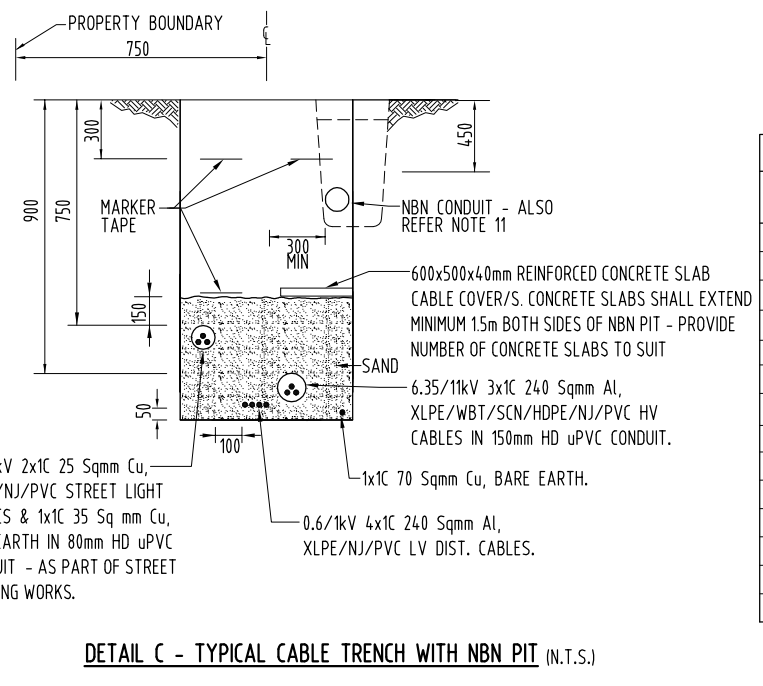
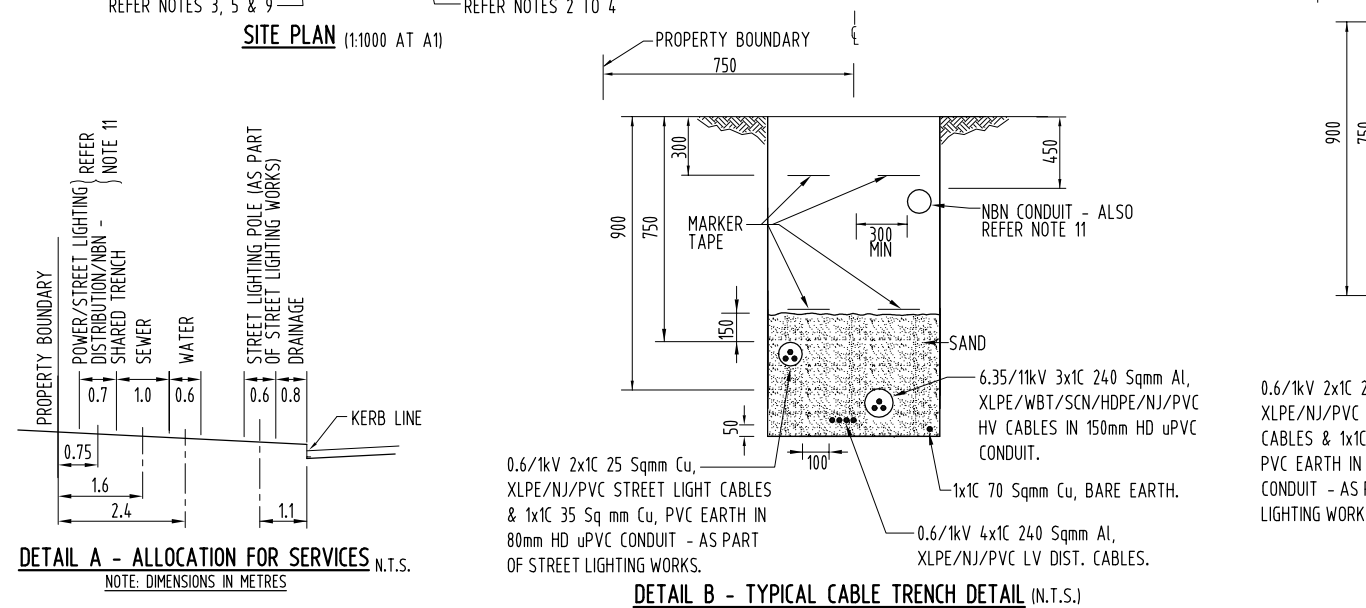


LEGEND

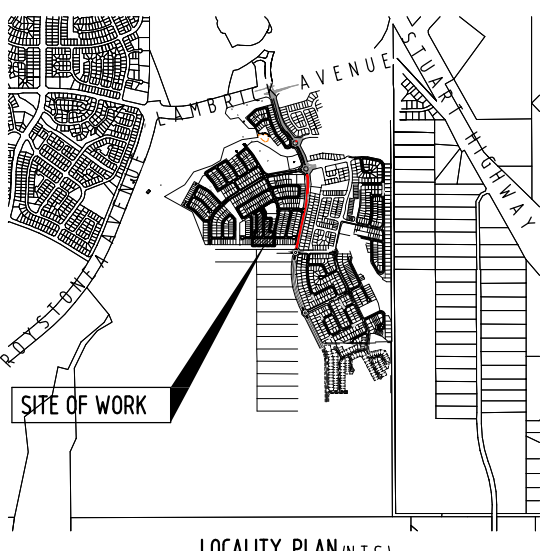
- EXISTING PACKAGE SUBSTATION (RATING AS SHOWN).
- NEW DISTRIBUTION DOUBLE LINK PILLAR - FUSED TYPE. 'E' INDICATES EXISTING/'F' INDICATES FUTURE.
- NEW DISTRIBUTION LINK PILLAR - FUSED TYPE. 'E' INDICATES EXISTING/'F' INDICATES FUTURE.
- NEW DISTRIBUTION PILLAR - FUSED TYPE. 'F' INDICATES FUTURE.
- EXISTING ROAD OWNER DIST. PILLAR.
- EXISTING LV DISTRIBUTION CABLE - 0.6/1kV 4 x 1C 240 Sq mm Al, XLPE/NJ/PVC - DIRECT BURIED (OR WITHIN CONDUIT AT ROAD CROSSING) & 1x1C 70 Sq mm Cu, BARE EARTH - DIRECT BURIED.
- NEW LV DISTRIBUTION CABLE - 0.6/1kV 4 x 1C 240 Sq mm Al, XLPE/NJ/PVC - DIRECT BURIED (OR WITHIN CONDUIT AT ROAD CROSSING) & 1 x 1C 70 Sq mm Cu, BARE EARTH - DIRECT BURIED. ALSO REFER NOTE 11.
- FUTURE LV DISTRIBUTION CABLE - 0.6/1kV 4 x 1C 240 Sq mm Al, XLPE/NJ/PVC - DIRECT BURIED (OR WITHIN CONDUIT AT ROAD CROSSING) & 1x1C 70 Sq mm Cu, BARE EARTH - DIRECT BURIED.
- NEW LV DISTRIBUTION CABLE - 0.6/1kV 4 x 1C 25 Sq mm Cu, XLPE/NJ/PVC - DIRECT BURIED (OR WITHIN CONDUIT AT ROAD CROSSING) & 1 x 1C 70 Sq mm Cu, BARE EARTH - DIRECT BURIED. ALSO REFER NOTE 11.
- EXISTING LV SERVICE CABLE - 0.6/1kV 2 x 1C 25 Sq mm Cu, XLPE/NJ/PVC - DIRECT BURIED (OR WITHIN CONDUIT AT ROAD CROSSING).
- EXISTING 3 PHASE LV SERVICE CABLE - 0.6/1kV 4x1C 25 Sq mm Cu, XLPE/NJ/PVC ENCLOSED IN 80mm HD uPVC CONDUIT.
- EXISTING SAND PIT.

NOTES

- 1 - REFER DWG No. B20-15012 FOR DETAILS OF ITEMS LISTED IN LEGEND.
- 2 - CONTRACTOR SHALL LOCATE EXISTING EARTH CABLING IN LOCATIONS SHOWN, JOINT NEW 1x1C 70 Sq mm Cu, BARE EARTH CABLING & EXTEND TO AND CONNECT TO NEW DIST. PILLARS P262ZU/P263ZU/P266ZU/P389ZU/P400ZU.
- 3 - CONTRACTOR SHALL LOCATE EXISTING SAND PITS AT LOCATIONS SHOWN & INSTALL NEW DIST. CABLING WITHIN EXISTING SPARE 1x100mm HD uPVC CONDUIT & THEN DIRECT BURIED TO NEW DIST. PILLARS P262ZU/P263ZU/P266ZU/P389ZU/P400ZU.
- 4 - CONTRACTOR SHALL LEAVE SUFFICIENT LENGTHS NEW LV DIST. CABLING (FROM NEW DIST. PILLAR P262ZU) COILED WITHIN EXISTING SAND PIT IN FRONT OF EXISTING DIST. PILLAR P261ZU & ARRANGE FOR POWER AND WATER TO PULL NEW LV DIST. CABLING THROUGH EXISTING SPARE 1x100mm SWEEP BEND INTO EXISTING DIST. PILLAR P261ZU & CONNECT/TERMINATE.
- 5 - CONTRACTOR SHALL LEAVE SUFFICIENT LENGTHS NEW LV DIST. CABLING (FROM NEW DIST. PILLAR P263ZU) COILED IN NEW SAND PIT IN FRONT OF EXISTING DIST. PILLAR P264ZU & ARRANGE FOR POWER AND WATER TO PULL NEW LV DIST. CABLING INTO EXISTING DIST. PILLAR P264ZU & CONNECT/TERMINATE.
- 6 - CONTRACTOR SHALL LEAVE SUFFICIENT LENGTHS NEW LV DIST. CABLING (FROM NEW DIST. PILLAR P400ZU) COILED WITHIN EXISTING SAND PIT IN FRONT OF EXISTING DIST. PILLAR P256ZU & ARRANGE FOR POWER AND WATER TO PULL NEW LV DIST. CABLING INTO EXISTING DIST. PILLAR P256ZU & CONNECT/TERMINATE.
- 7 - CONTRACTOR SHALL LEAVE SUFFICIENT LENGTHS NEW LV DIST. CABLING (FROM NEW DIST. PILLAR P389ZU) COILED WITHIN EXISTING SAND PIT IN FRONT OF EXISTING DIST. PILLAR P390ZU & ARRANGE FOR POWER AND WATER TO PULL NEW LV DIST. CABLING THROUGH EXISTING SPARE 1x100mm SWEEP BEND INTO EXISTING DIST. PILLAR P390ZU & CONNECT/TERMINATE.
- 8 - CONTRACTOR SHALL LEAVE SUFFICIENT LENGTHS NEW LV DIST. CABLING (FROM NEW DIST. PILLAR P266ZU) COILED WITHIN EXISTING SAND PIT IN FRONT OF EXISTING DIST. PILLAR P410ZU & ARRANGE FOR POWER AND WATER TO PULL NEW LV DIST. CABLING THROUGH EXISTING SPARE 1x100mm SWEEP BEND INTO EXISTING DIST. PILLAR P410ZU & CONNECT/TERMINATE.
- 9 - CONTRACTOR SHALL ARRANGE FOR POWER AND WATER TO OPEN LV LINKS IN EXISTING PILLAR P250ZU (LV DIST. CABLE FROM EXISTING DIST. PILLAR P251ZU) & CLOSE LV LINKS IN EXISTING PILLAR P250ZU (LV DIST. CABLE FROM EXISTING DIST. PILLAR P249ZU), CLOSE LV LINKS IN EXISTING DIST. PILLAR P256ZU (LV DIST. CABLE FROM NEW DIST. PILLAR P400ZU) & OPEN LV LINKS IN EXISTING PILLAR P264ZU (LV DIST. CABLE FROM EXISTING DIST. PILLAR P255ZU).
- 10 - LV CABLING SHALL BE RUN BELOW (DEEPER THAN STANDARD ELECTRICAL TRENCH DEPTH/COVER) SEWER/DRAINAGE WITH A MINIMUM OF 300mm CLEARANCE AT CROSSOVER LOCATIONS. COORDINATE ON SITE WITH CIVIL CONTRACTOR.
- 11 - MINIMUM 300mm HORIZONTAL SEPARATION REQUIRED BETWEEN EDGE OF NBN CONDUIT/S & LV CABLING. TRENCH WIDTH MAYBE EXTENDED BY 200mm TOWARDS PROPERTY BOUNDARY TO ENSURE 300mm HORIZONTAL SEPARATION PROVIDED. WHERE 300mm SEPARATION NOT PROVIDED, LV CABLING SHALL BE INSTALLED IN 100mm HD uPVC CONDUIT. ALSO REFER, DETAILS B & C.



PILLAR SCHEDULE		
PILLAR	630A STRIPPLE FUSE UNIT	160A STRIPPLE FUSE UNIT
P262ZU	3	1
P263ZU	2	1
P265ZU	2	1
P266ZU	3	1
P388ZU	2	1
P389ZU	3	1
P393ZU	2	1
P394ZU	2	1
P395ZU	3	1
P396ZU	1	1
P397ZU	3	1
P398ZU	1	1
P399ZU	2	1
P400ZU	2	1



DEVELOPER: TERRITORY LIFE GPO Box 1779 DARWIN NT 0801		AGA CONSULTING ENGINEERS PTY LTD ELECTRICAL & MECHANICAL AON 070 242 296		GPO BOX 3097 DARWIN NT 0801		TELEPHONE: 08 8946582 FACSIMILE: 08 8942400 EMAIL: alekg@ageng.com.au		0 CONTRACT DRAWING NO DESCRIPTION AMENDMENTS		K.T. 9-10-20 DRN DATE APPD DRG NO		820-15013 820-15012 820-15011 820-15010		SINGLE LINE DIAGRAM & LEGEND NOTES & ASSET SCHEDULE MASTER SERVICES PLAN CONDUIT/DUCT LAYOUT		TITLE ASSOCIATED DRAWINGS		DRAWING STATUS P PRELIMINARY/PROPOSED T TENDERING PURPOSES ONLY AC APP. FOR CONSTRUCTION AI AS INSTALLED C CANCELLED/SUPERSEDED		APPD DATE AGA406-21A		NORTHERN TERRITORY		DES A.GANGUR DRN K.TAVENER CKD A.GANGUR APPD SCALE AS SHOWN ISSUED 9-10-20 ALL DIM. IN mmm		POWER SERVICES - PALMERSTON DISTRIBUTION SUBDIVISION OF LOT 12087 ZUCCOLI SUBDIVISION - STAGE 2 : STAGE 212 LV ELECTRICAL RETICULATION		DRAWING NUMBER B20-15009			
-----------------------------------------------------------------------	--	---------------------------------------------------------------------------------------	--	--------------------------------	--	-----------------------------------------------------------------------------	--	----------------------------------------------------	--	-----------------------------------------	--	--------------------------------------------------	--	-------------------------------------------------------------------------------------------------------	--	------------------------------	--	------------------------------------------------------------------------------------------------------------------------------------------------	--	-------------------------	--	--------------------	--	--------------------------------------------------------------------------------------------------------------	--	--------------------------------------------------------------------------------------------------------------------------------------------------------	--	------------------------------------	--	--	--